

State of Wyoming Corner Record

(In compliance with the **CORNER PERPETUATION AND FILING ACT**, Wyoming Statutes, 1997 Section 33-29-140 et. seq., and the Rules and Regulations of the Board of Professional Engineers and Professional Land Surveyors)

Reverse side of this form may be used if more space is needed.

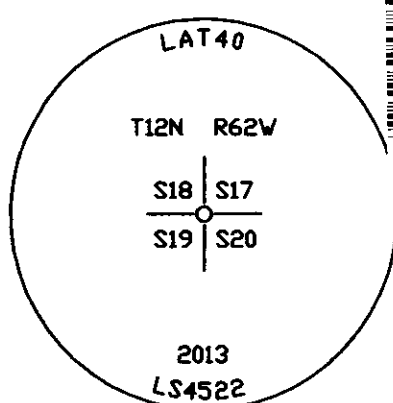
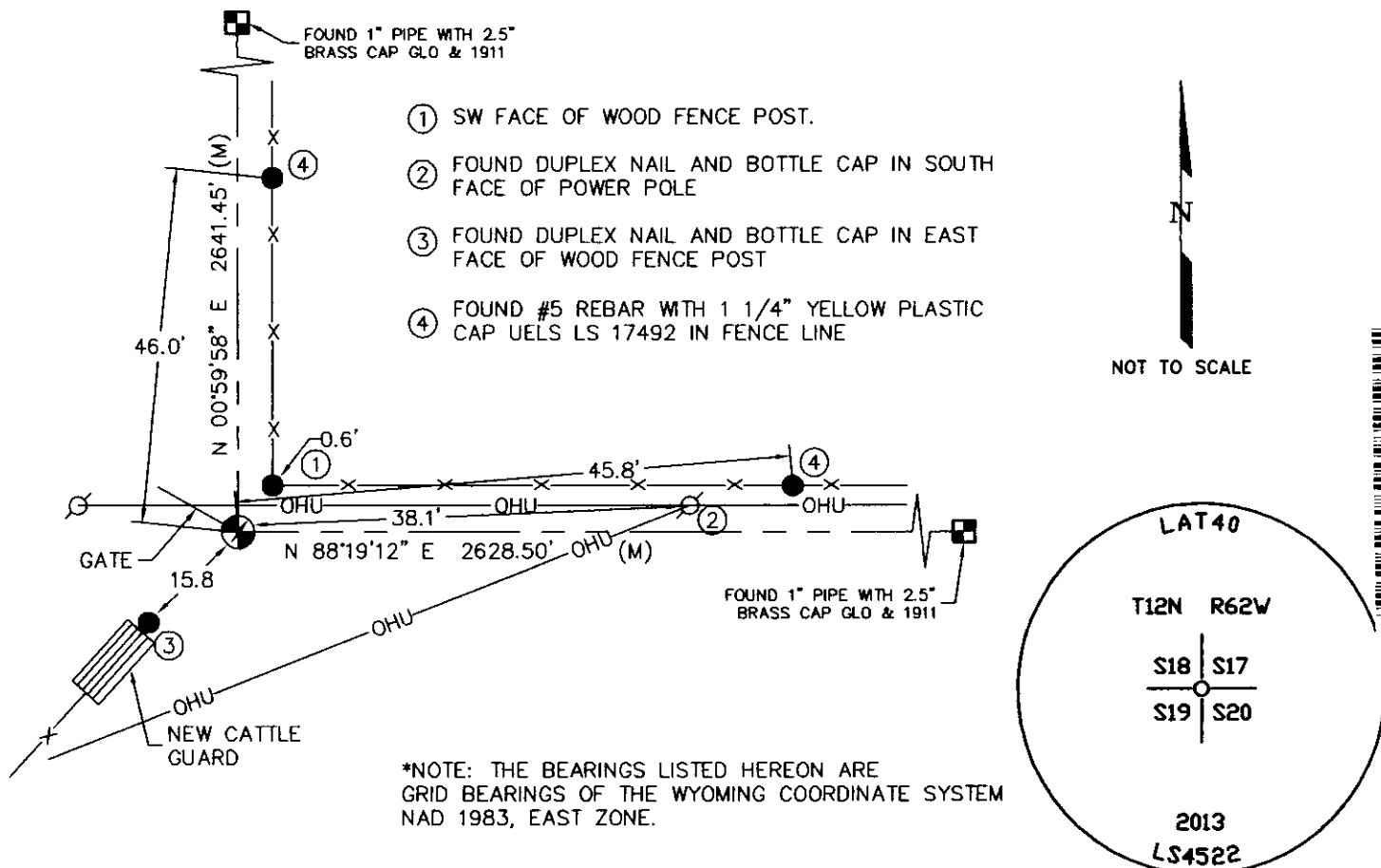
Record of original survey and citation of source of historical information (if corner is lost or obliterated). Description of corner monumentation evidence found and/or monument and accessories established to perpetuate the location of this corner. Sketch of relative location of monument, accessories, and reference points with course and distance to adjacent corner(s) (if determined in this survey). Method and rationale for reestablishment of lost or obliterated corner.

GLO RECORD: "SET AN IRON POST, 3 FT. LONG, 2 INS. DIAM., 2 1/2 FT. IN THE GROUND, FOR COR. OF SEC. 17,18,19 AND 20, AND MARK ON THE BRASS CAP ON THE POST."

MONUMENT FOUND: FOUND BROKEN 2" IRON PIPE FILLED WITH CONCRETE SET FLUSH WITH GROUND. FOUND REMAINING 2" IRON PIPE WITH 2 1/2" BRASS CAP GLO 1911 WIRED TO A FENCE POST. REMAINING 2" IRON PIPE WITH BRASS CAP ALSO FILLED WITH CONCRETE.

MONUMENT SET: SET 30" OF #6 REBAR WITH 2 1/2" ALUM CAP, LS 4522 FLUSH WITH GROUND, ALSO BURIED BROKEN 2" IRON PIPE AND REMAINING 2" IRON PIPE WITH 2 1/2" BRASS CAP UPSIDE DOWN ON THE NORTH SIDE OF THE NEW MONUMENT ± 0.4' BELOW GRADE AS A MEMORIAL TO THE ORIGINAL 1911 GLO MONUMENT.

REFERENCES: FOUND REFERENCE TIES AS SHOWN IN SKETCH BELOW.



RECORDED 2/21/2013 AT 10:03 AM REC# 608777 X# 2322 PG# 650
DEBRA K. LATHROP, CLERK OF LARAMIE COUNTY, WY PAGE 1 OF 1

Date of Field Work: 2/18/2013

Office Reference: 2012084 (LAT40)

Found Monument Inscription

Cross Index Plat

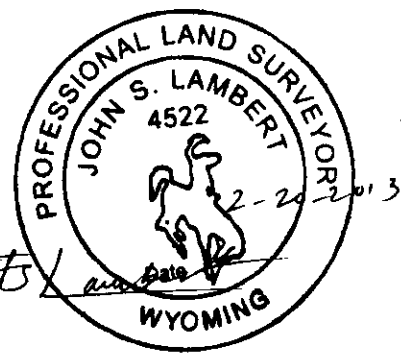
Firm/Agency, Address

	1	2	3	4	5	6	7	8	9	10	11	12	13	14	15	16	17	18	19	20	21	22	23	24	25
A	+	+	+	+	+	+	+	+	+	+	+	+	+	+	+	+	+	+	+	+	+	+	+	+	+
B	+	+	+	+	+	+	+	+	+	+	+	+	+	+	+	+	+	+	+	+	+	+	+	+	+
C	+	6	+	5	+	4	+	3	+	2	+	1	+	+	+	+	+	+	+	+	+	+	+	+	+
D	+	+	+	+	+	+	+	+	+	+	+	+	+	+	+	+	+	+	+	+	+	+	+	+	+
E	+	+	+	+	+	+	+	+	+	+	+	+	+	+	+	+	+	+	+	+	+	+	+	+	+
F	+	+	+	+	+	+	+	+	+	+	+	+	+	+	+	+	+	+	+	+	+	+	+	+	+
G	+	7	+	8	+	9	+	10	+	11	+	12	+	+	+	+	+	+	+	+	+	+	+	+	+
H	+	+	+	+	+	+	+	+	+	+	+	+	+	+	+	+	+	+	+	+	+	+	+	+	+
I	+	+	+	+	+	+	+	+	+	+	+	+	+	+	+	+	+	+	+	+	+	+	+	+	+
J	+	+	+	+	+	+	+	+	+	+	+	+	+	+	+	+	+	+	+	+	+	+	+	+	+
K	+	+	+	+	+	+	+	+	+	+	+	+	+	+	+	+	+	+	+	+	+	+	+	+	+
L	+	18	+	17	+	16	+	15	+	14	+	13	+	+	+	+	+	+	+	+	+	+	+	+	+
M	+	+	+	+	+	+	+	+	+	+	+	+	+	+	+	+	+	+	+	+	+	+	+	+	+
N	+	+	+	+	+	+	+	+	+	+	+	+	+	+	+	+	+	+	+	+	+	+	+	+	+
O	+	+	+	+	+	+	+	+	+	+	+	+	+	+	+	+	+	+	+	+	+	+	+	+	+
P	+	19	+	20	+	21	+	22	+	23	+	24	+	+	+	+	+	+	+	+	+	+	+	+	+
Q	+	+	+	+	+	+	+	+	+	+	+	+	+	+	+	+	+	+	+	+	+	+	+	+	+
R	+	+	+	+	+	+	+	+	+	+	+	+	+	+	+	+	+	+	+	+	+	+	+	+	+
S	+	+	+	+	+	+	+	+	+	+	+	+	+	+	+	+	+	+	+	+	+	+	+	+	+
T	+	30	+	29	+	28	+	27	+	26	+	25	+	+	+	+	+	+	+	+	+	+	+	+	+
U	+	+	+	+	+	+	+	+	+	+	+	+	+	+	+	+	+	+	+	+	+	+	+	+	+
V	+	+	+	+	+	+	+	+	+	+	+	+	+	+	+	+	+	+	+	+	+	+	+	+	+
W	+	+	+	+	+	+	+	+	+	+	+	+	+	+	+	+	+	+	+	+	+	+	+	+	+
X	+	31	+	32	+	33	+	34	+	35	+	36	+	+	+	+	+	+	+	+	+	+	+	+	+
Y	+	+	+	+	+	+	+	+	+	+	+	+	+	+	+	+	+	+	+	+	+	+	+	+	+
Z	+	+	+	+	+	+	+	+	+	+	+	+	+	+	+	+	+	+	+	+	+	+	+	+	+

LAT*40, Inc.
1635 Foxtrail Drive, Suite 325
Loveland, Colorado 80538
 Telephone Number: 970-776-3321

This corner record was prepared by me or under my direction and supervision.

SEAL & SIGNATURE



Corner Name Southeast Corner Section 18, T 12 N, R 62 W, 6th P.M.
 County: LARAMIE Wyoming

Cross-Index No.: N-5